


Get started with NoMachine



Download and install the software for your operating system on the computer or device you are connecting from and on the Windows/Linux/Mac computer you want to connect to. You can easily share a remote desktop or control a server over any network. No matter where you are, NoMachine makes it safe and easy to quickly access a remote desktop within a few seconds. If you are looking for the additional downloads of the Enterprise product line, click [here](#).

 **NoMachine for Windows**
Windows i386/AMD64 XP/Vista/7/8/8.1/10/Windows Server 2008/2012/2016
[Download](#)

 **NoMachine for Mac**
Mac Intel 64-bit OS X 10.7 or later, macOS 10.12/10.13/10.14
[Download](#)


 **NoMachine for Linux**
Linux i386/AMD64, RHEL 4.4 or later, SUSE 10 or later, Fedora 10 or later, Debian 4 or later, Ubuntu 8.04 or later
[Download](#)



Table of Contents

Introduction	2
Linux installation	2
Creating new connection links	4
Connection to cluster	7
Trinity desktop setup wizard.....	10
Keyboard selection and Colors for non-TDE applications	12
Installation on Windows.....	13
Connection to HPCFS	16
Desktop Setup Wizard	19
Keyboard selection and Colors for non-TDE applications	22

Introduction

NoMachine remote virtual desktop used at HPCFS allow persistent and graphics desktop connection with installation of remote access clients that compress the hardware accelerated (VirtualGL) graphical desktop over internet. To connect to the cluster prior installation of the NoMachine client is required.

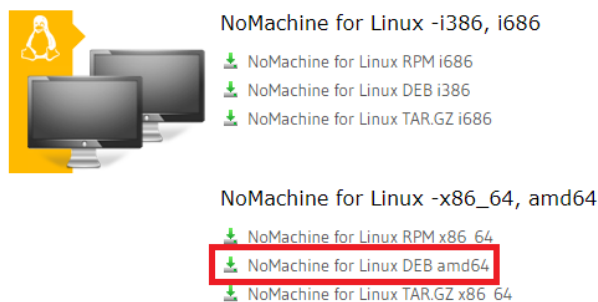
There are 3 possible graphical desktops:

1. Regular free client that allows also connection to your local desktop within the local network. Got to <https://www.nomachine.com/download>
2. Enterprise client is only client to our cluster <https://www.nomachine.com/download-enterprise#NoMachine-Enterprise-Client>
3. As a last resort one can login through <https://viz.hpc.fs.uni-lj.si:4443/> Connection to non-standard port can be firewalled and uses JavaScript from your browser and can be therefore a burden for a server and your computer browser.

SSH terminal access to login.hpc.fs.uni-lj.si and SSH protocol is also possible but not covered in the following instructions.

Linux installation

Select Download under NoMachine for Linux



Select NoMachine for Linux DEB amd64 on Ubuntu

NoMachine for Linux - amd64



Version: 6.7.6_11
Package size: 44,01 MB
Package type: DEB
MDS signature: 4d94be64f52b4b5d726da7d2610feaaa
For: Debian GNU Linux 4.0 Etch/5.0 Lenny/6.0 Squeeze/7.0 Wheezy/8.0 Jessie/9.0 Stretch, Ubuntu 8.04 Hardy Heron/8.10 Intrepid Ibex/9.04 Jaunty Jackalope/9.10 Karmic Koala/10.4 Lucid Lynx/10.10 Maverick Meerkat/11.04 Natty Narwhal/11.10 Oneiric Ocelot/12.04 Precise Pangolin/12.10 Quantal Quetzal/13.04 Raring Ringtail/13.10 Saucy Salamander/14.04 Trusty Tahr/14.10 Utopic Unicorn/15.04 Vivid Vervet/15.10 Wily Werewolf/16.04 Xenial Xerus/16.10 Yakkety Yak/17.04 Zesty Zapus/17.10 Artful Aardvark/18.04 Bionic Beaver/18.10 Cosmic Cuttlefish/19.04 Disco Dingo

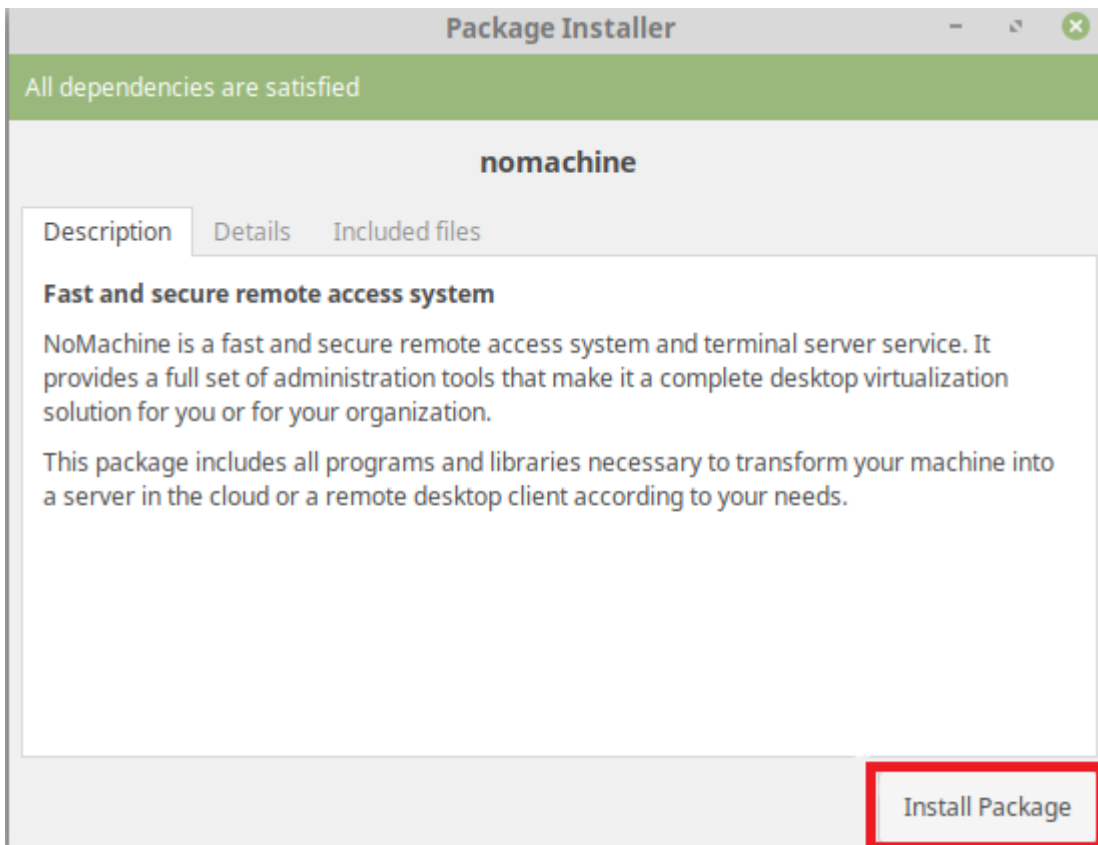


The free NoMachine product is designed to work the same across Windows, Mac and Linux and give users access to the physical desktop of the remote computer. If you need to create virtual Linux desktops on demand, want to limit the logins to SSH, or are using NIS, Kerberos or other enterprise functionalities, you need one of the NoMachine Enterprise products you can download [here](#).

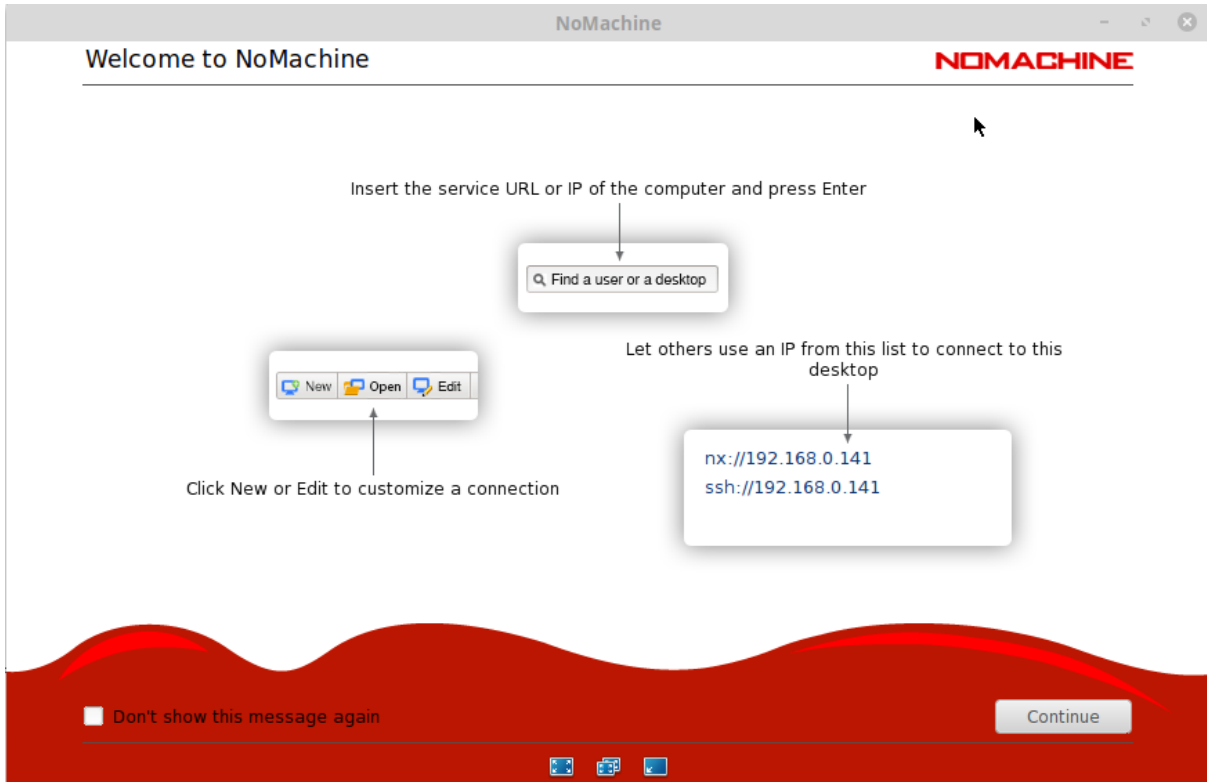
Note that you can use NoMachine 6 as a client of a NoMachine server, or you can download the free Enterprise client [here](#).

Download

Select Download

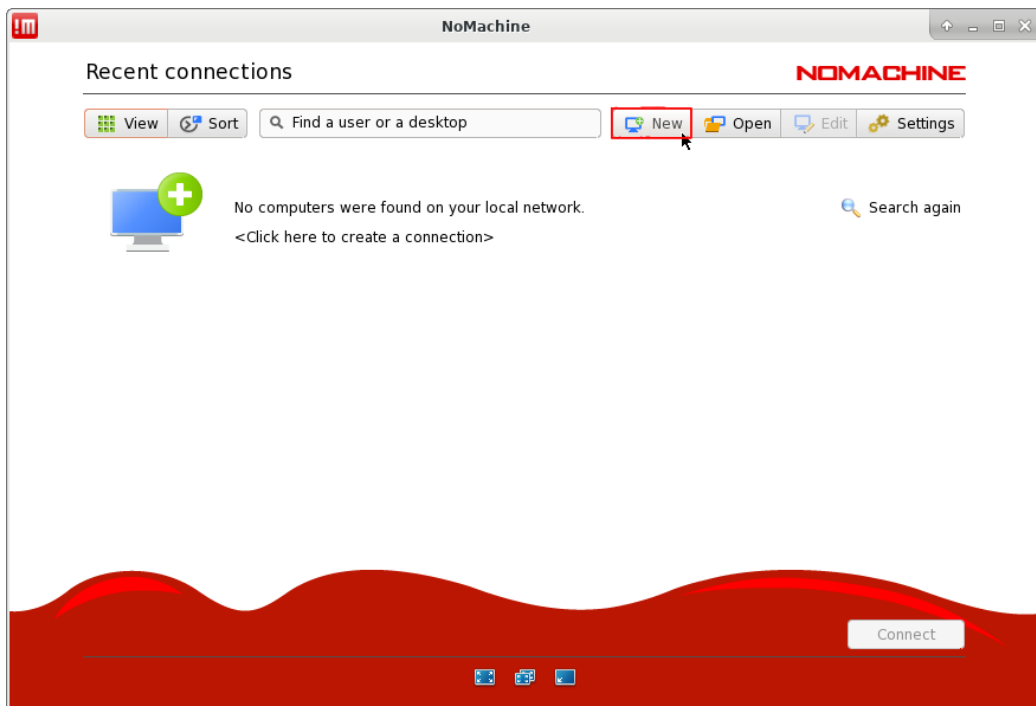


Double-click to open the downloaded file. In the pop-up window, select Install Package. If necessary, enter your password.

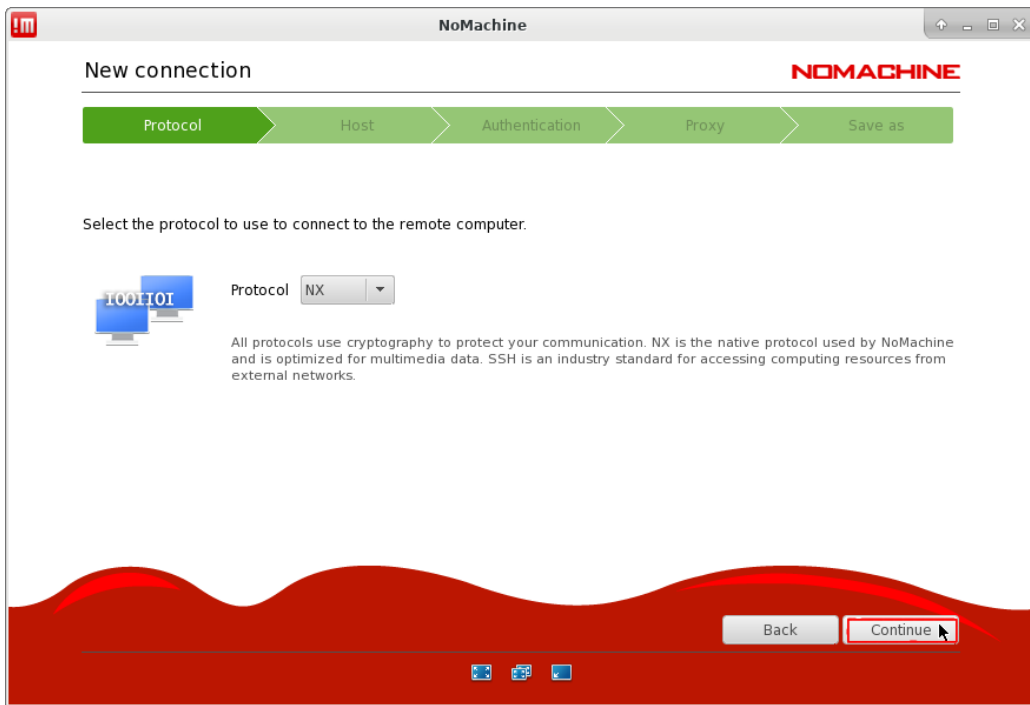


After successful installation, you can find NoMachine between programs. You can open it with a single click. Read the welcome screen carefully as it contains key instructions and information on how to handle the NoMachine program.

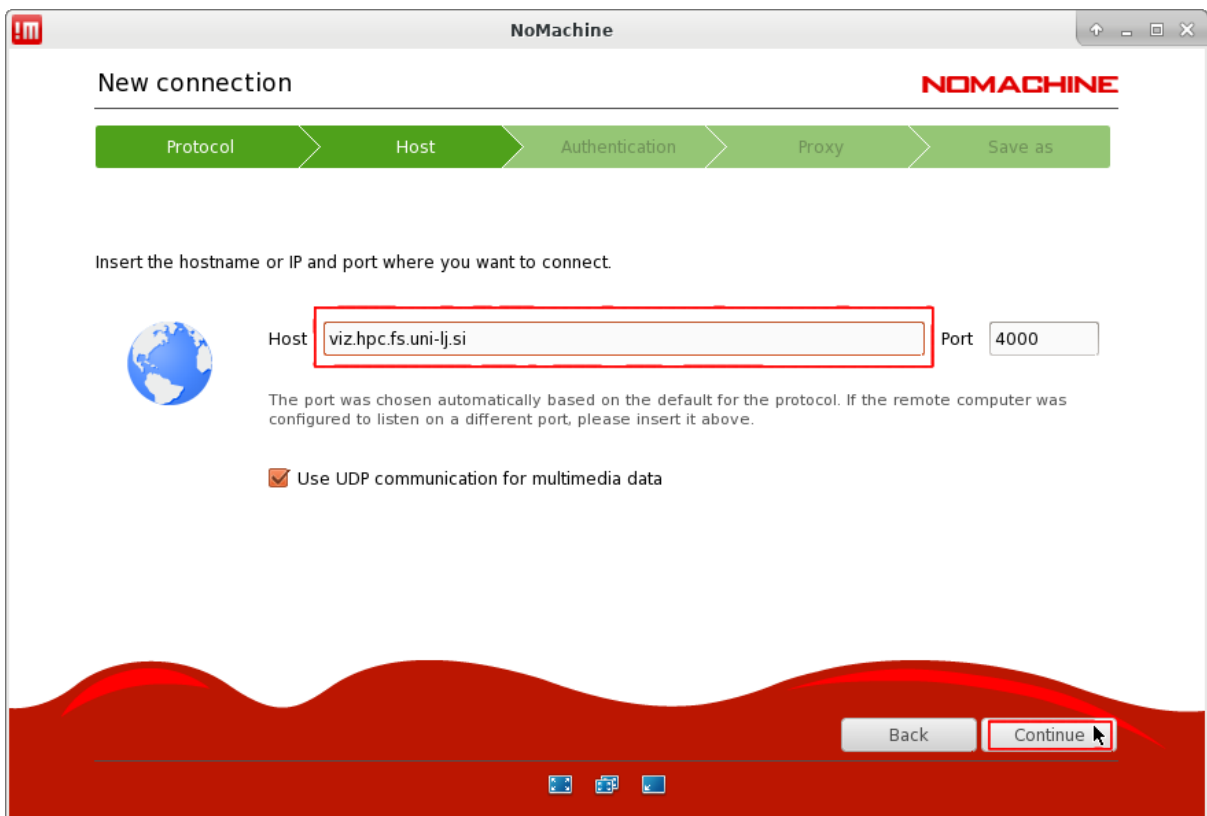
Creating new connection links



We click on New to create a new link.



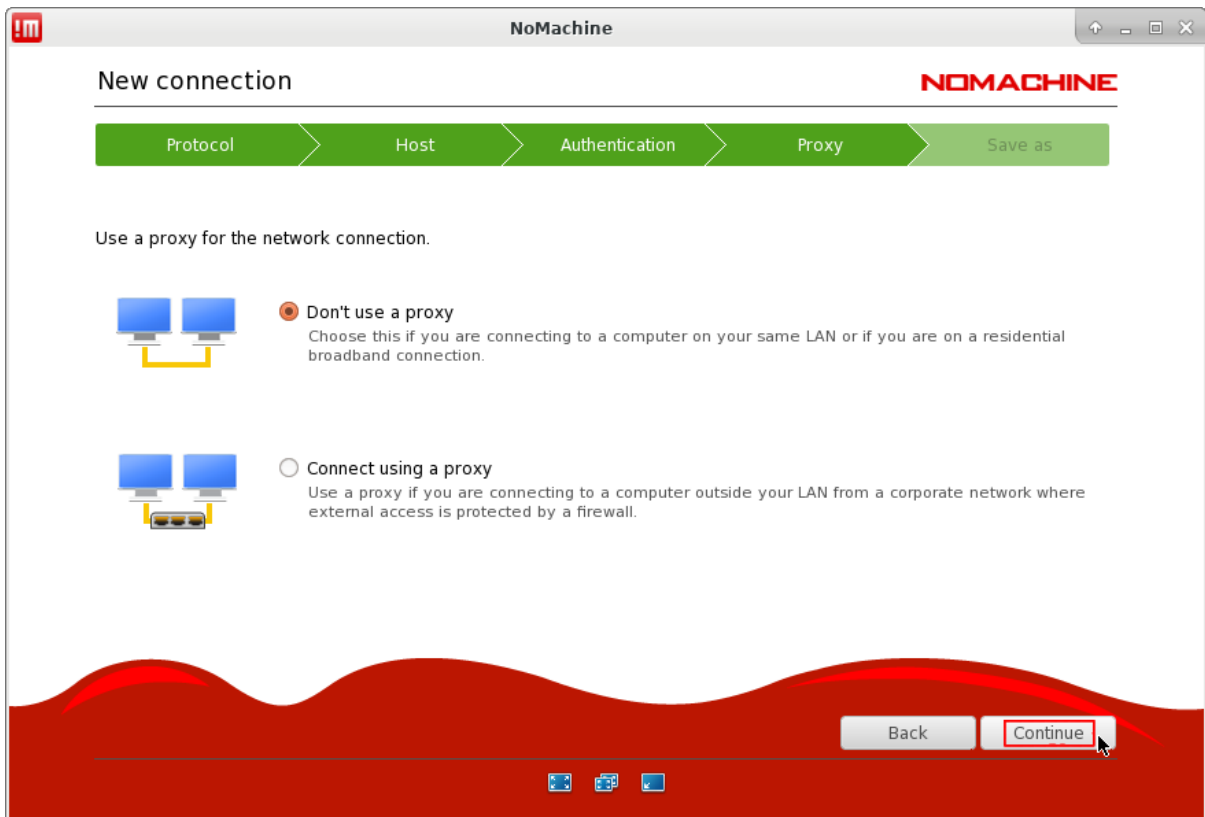
When prompted for Protocol leave the selected NX and choose Continue.



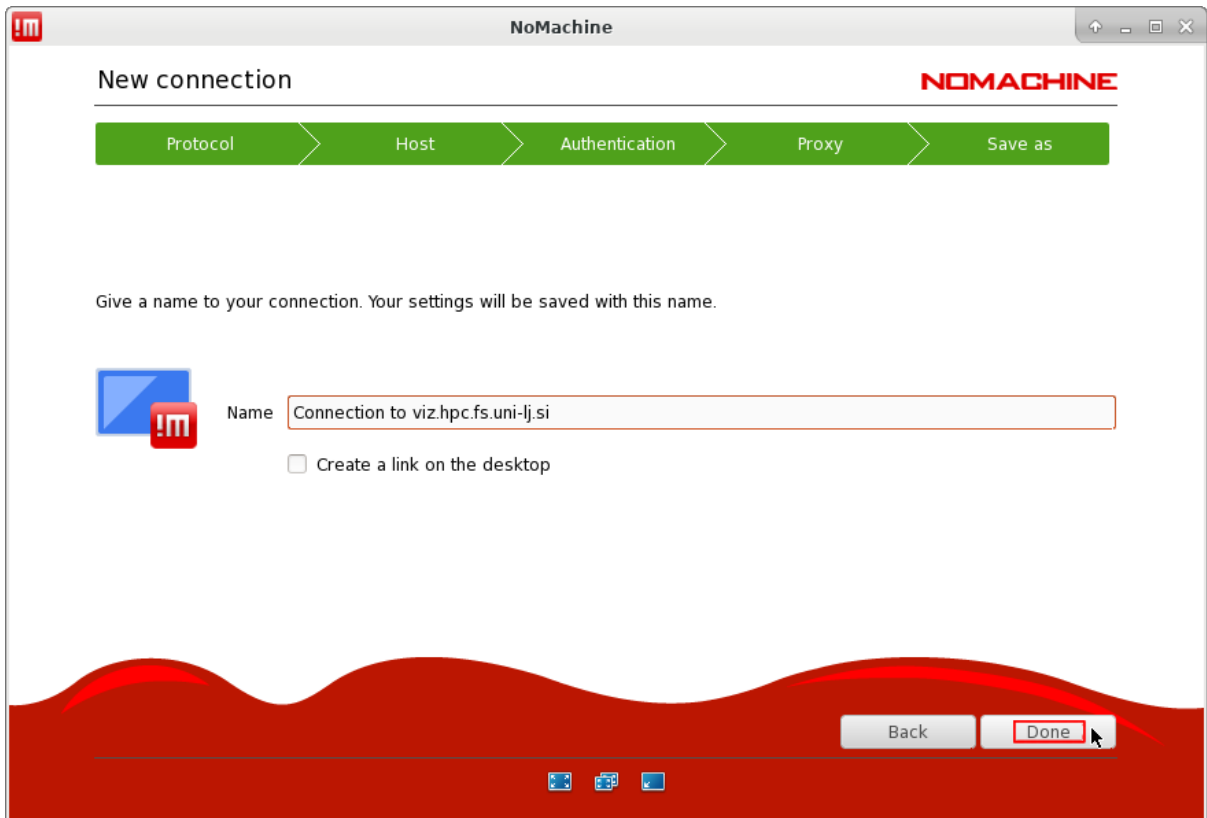
Enter the server name "viz.hpc.fs.uni-lj.si" and select Continue.



We select access with "Password" and choose Continue.

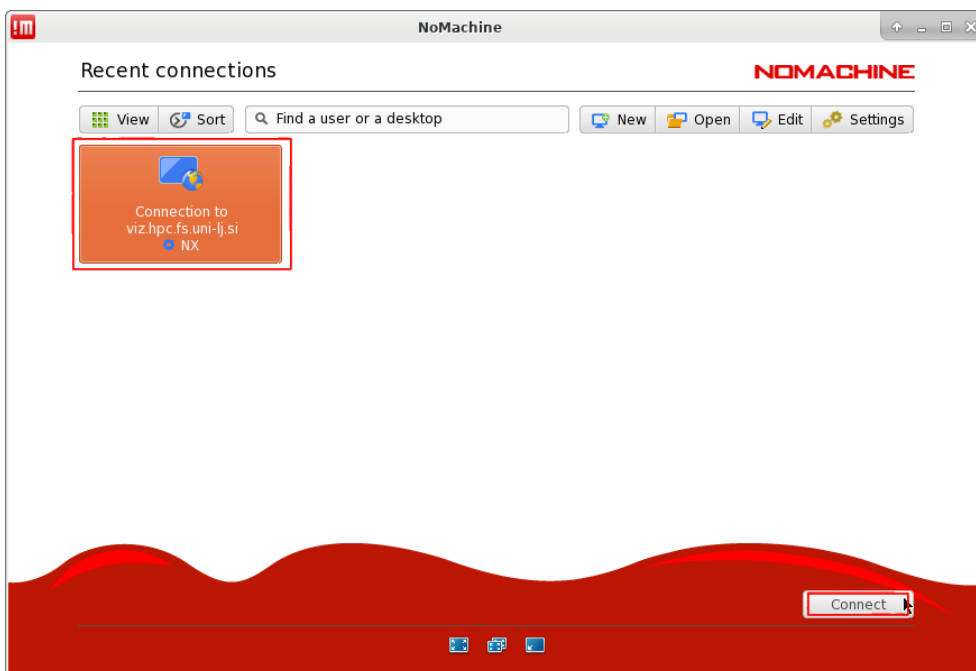


Let's leave Don't use a proxy unless I connect through a proxy server. We choose Continue.



Specifies the connection name and if you want to create a shortcut to the desktop. We choose Done.

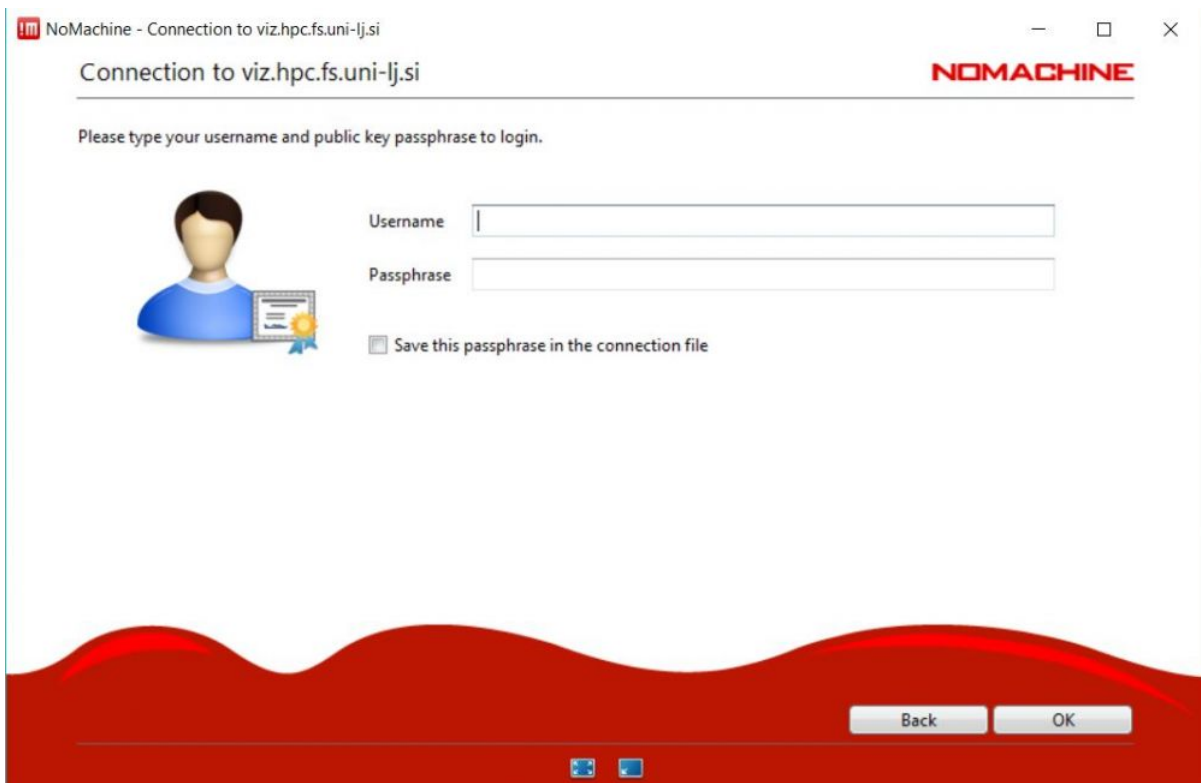
Connection to cluster



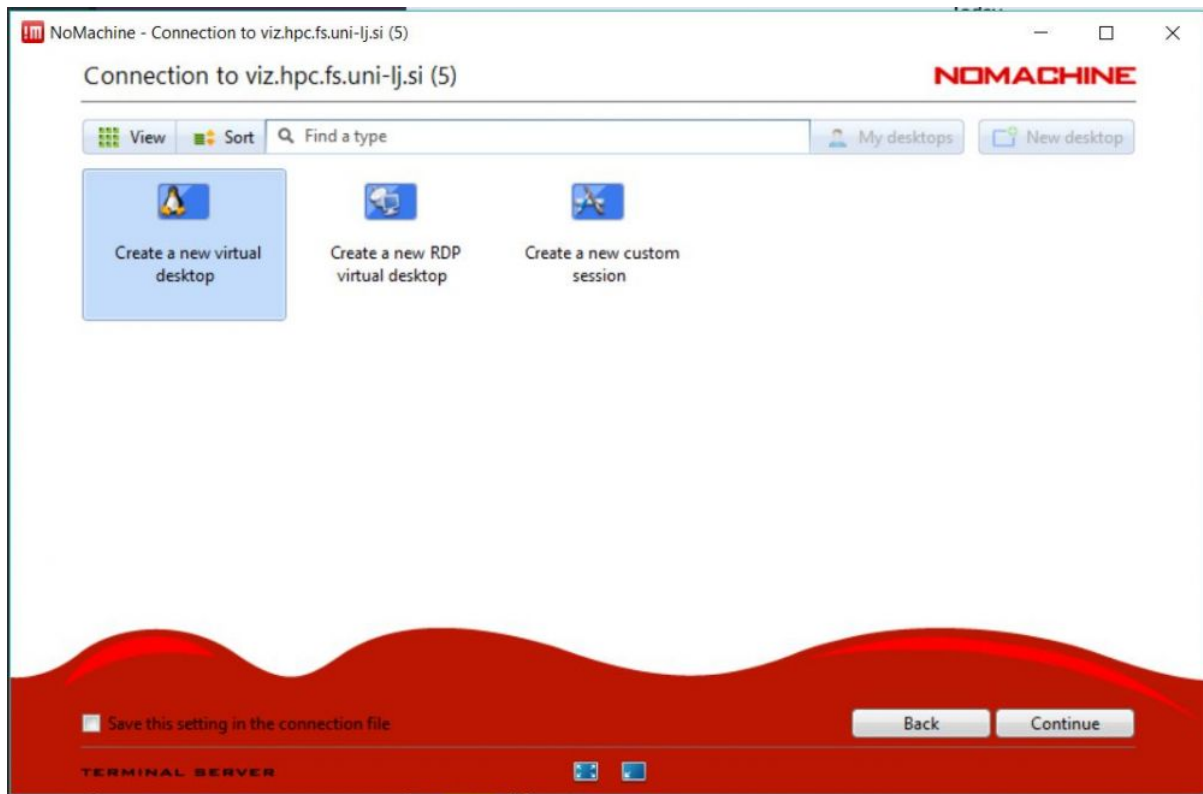
Select the saved link and click on the "Connect" button



The first time you connect, you can be asked to confirm the server's validation. If the data matches, select Yes.



Enter your username on the HPC FS system and the password that unlocks your key and click on the "OK" button.



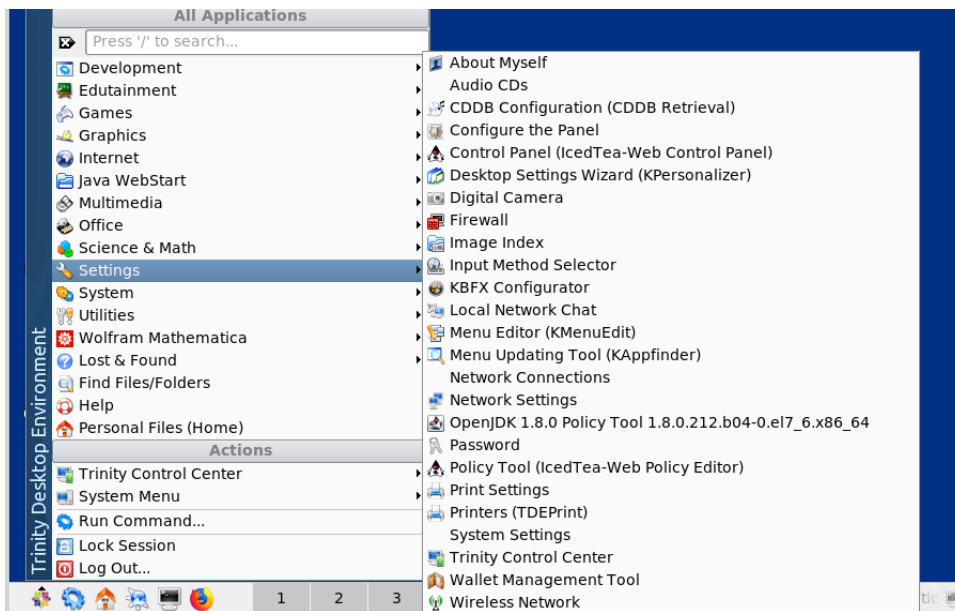
Select "Create a new virtual desktop" and click on the "Continue" button.



The program will show you how to manage your desktop. READ THEM CAREFULLY and continue by clicking on the "OK" button. The Process of Creating Your Desktop will begin.

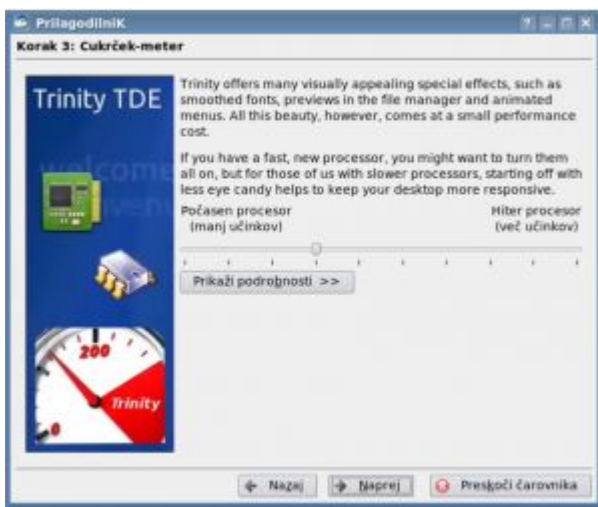
Trinity desktop setup wizard

Please select Desktop Settings Wizard (kPersonalizer)

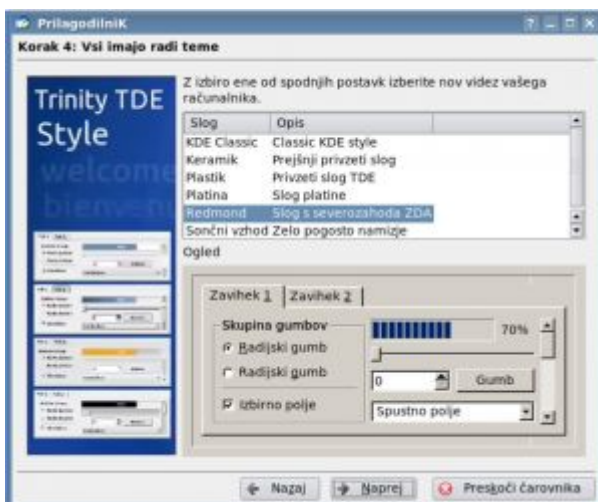


The Desktop Setup Wizard will also appear the first time you start your desktop. We recommend settings, as in the screenshots below.



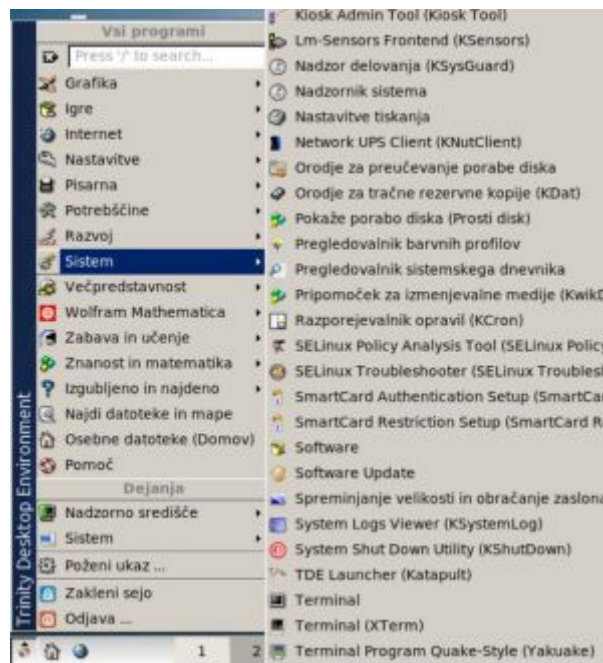


Move to the left for the fastest desktop response!





When you're done with the wizard, a new desktop will be ready for you. When you first start, you'll also have pop-ups with a presentation that you can close.

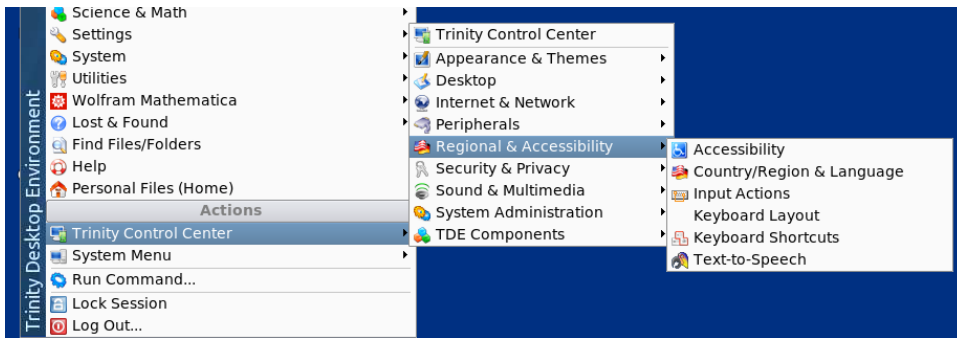


All programs are available to you from the Start menu.

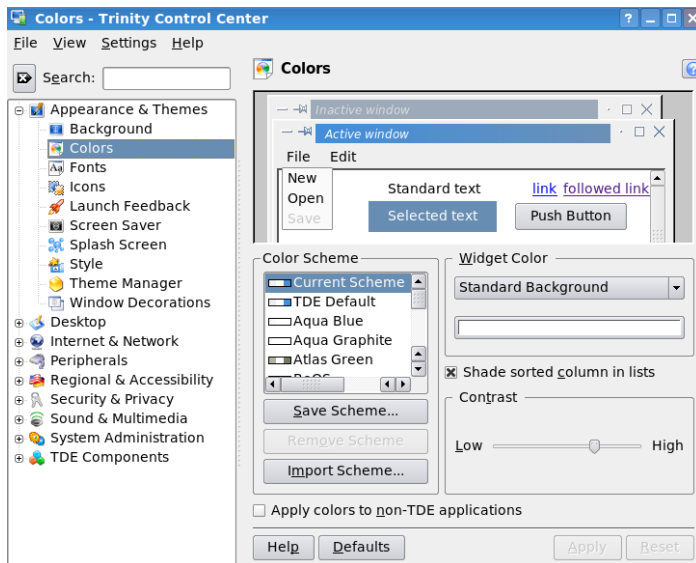
You can access the terminal from the system – Terminal

Keyboard selection and Colors for non-TDE applications

To select keyboard layout use



Disable use of colors for non-TDE applications in Trinity Control Center



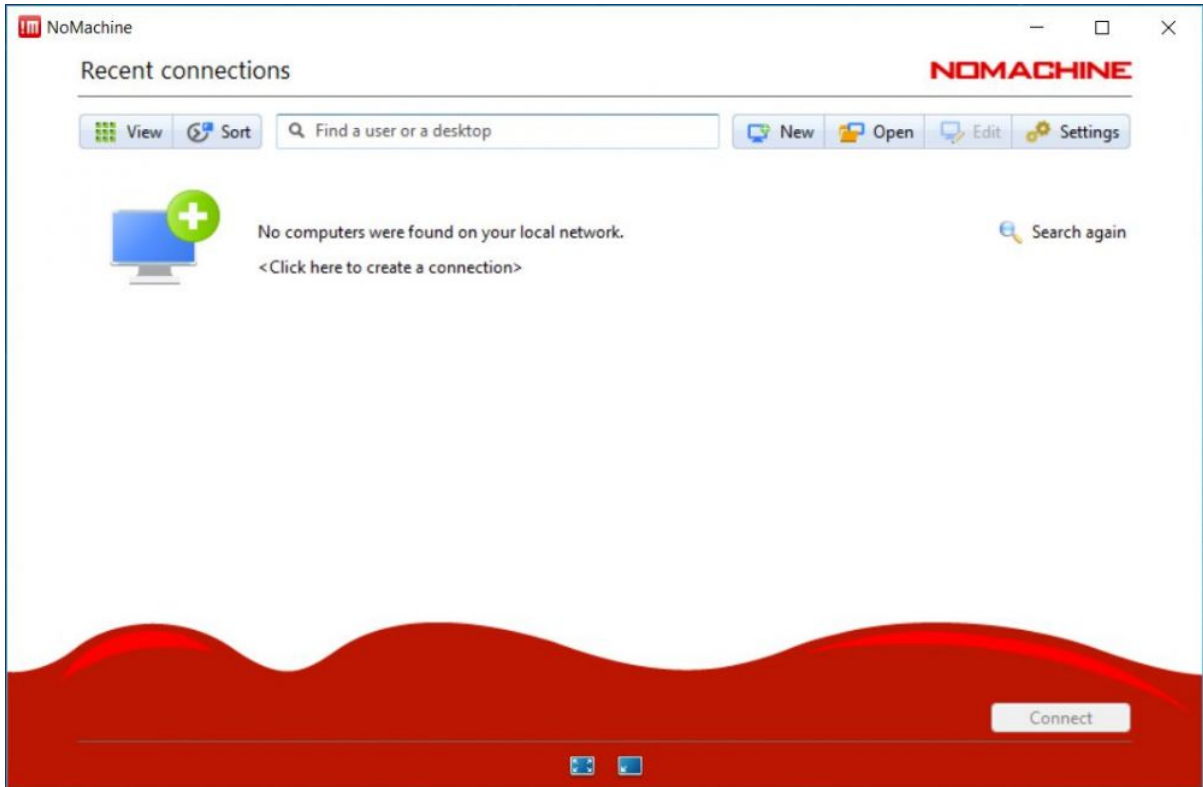
When you're done with work, log off from the session. To do this, select Start menu – Logout

Installation on Windows

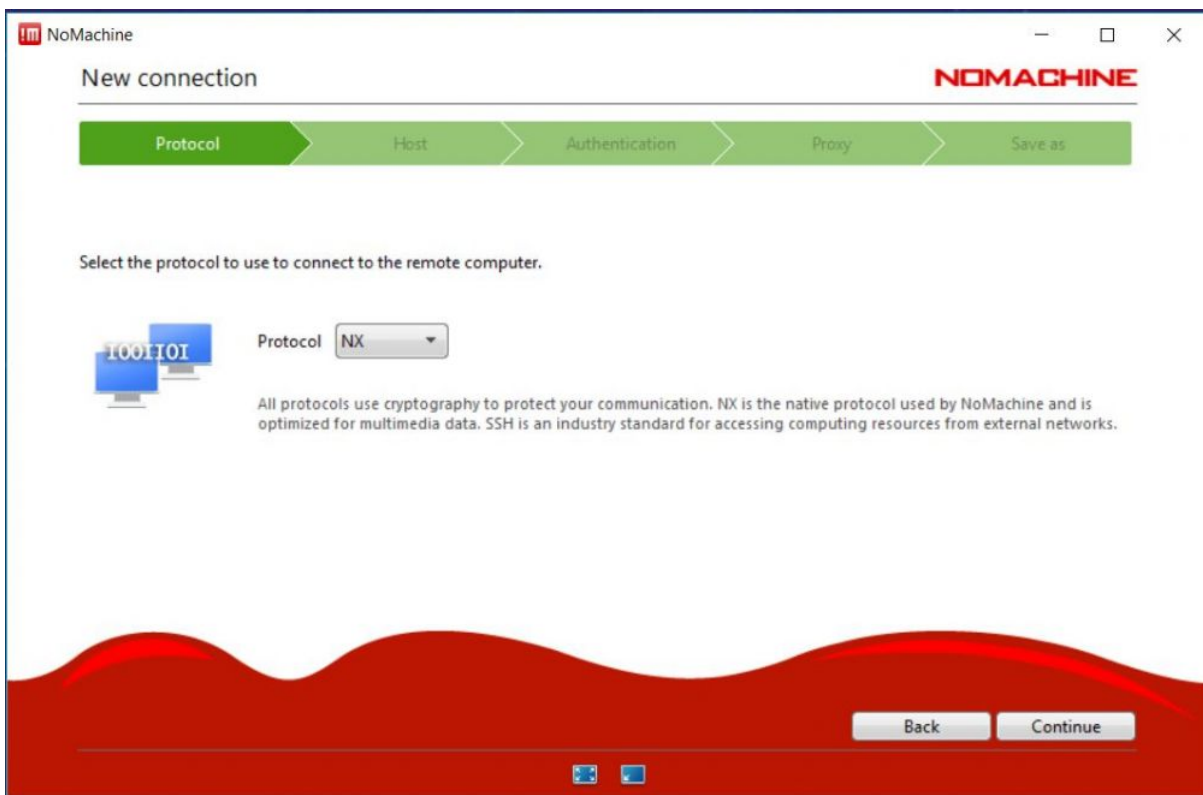
Get the app on the <https://www.nomachine.com/download/>

Alternatively one can download just lightweight <https://www.nomachine.com/download-enterprise#NoMachine-Enterprise-Client>

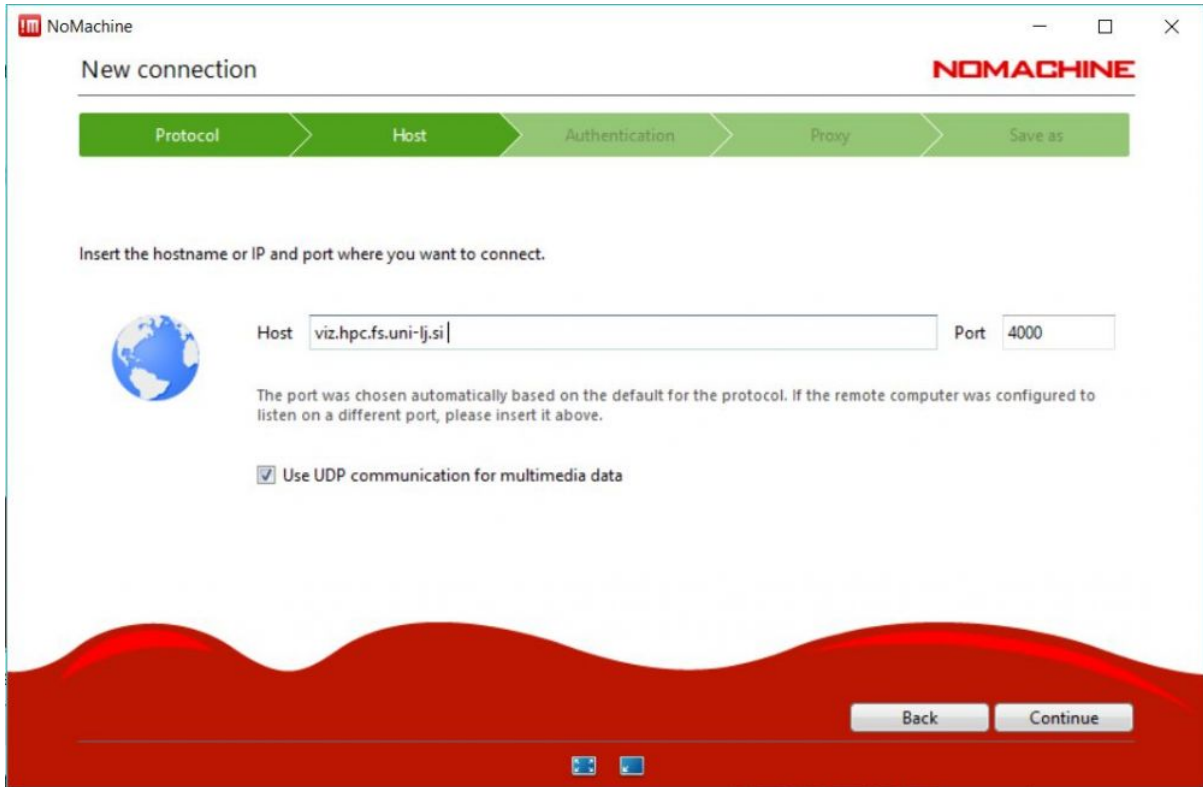
After successful installation, start the program.



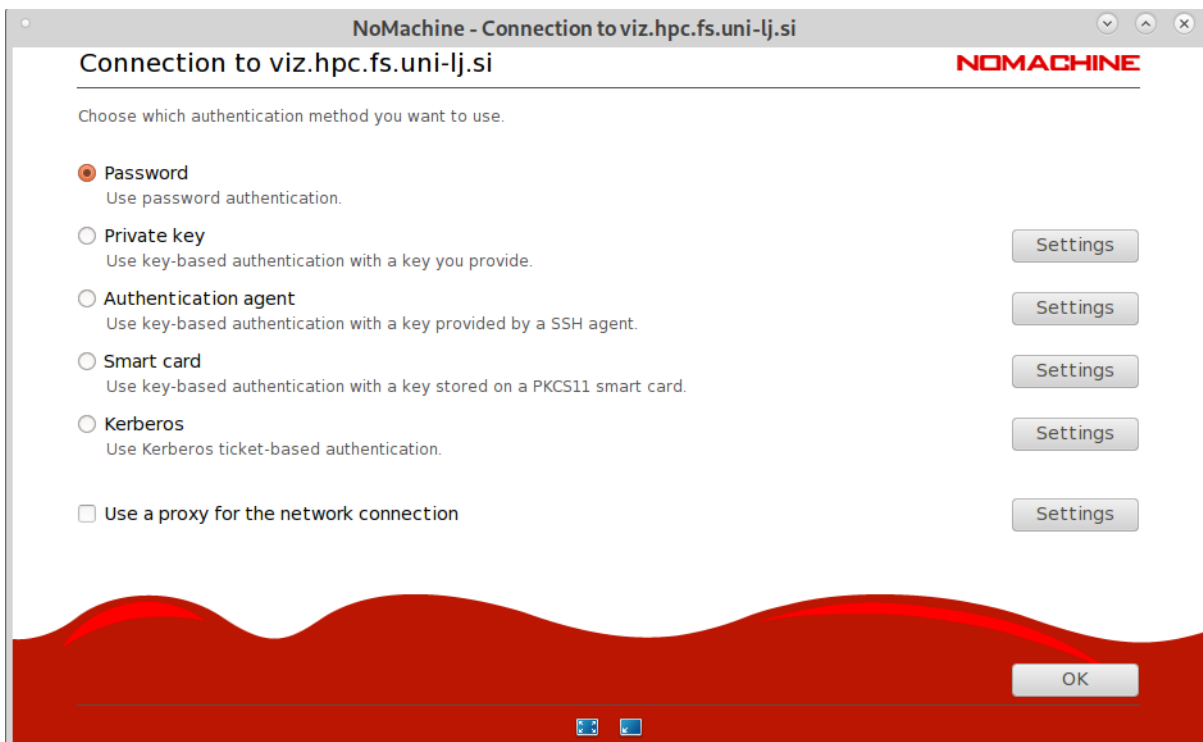
Click on the "New" button to start preparing a new session



Select the protocol "NX" and click on the button "Continue"



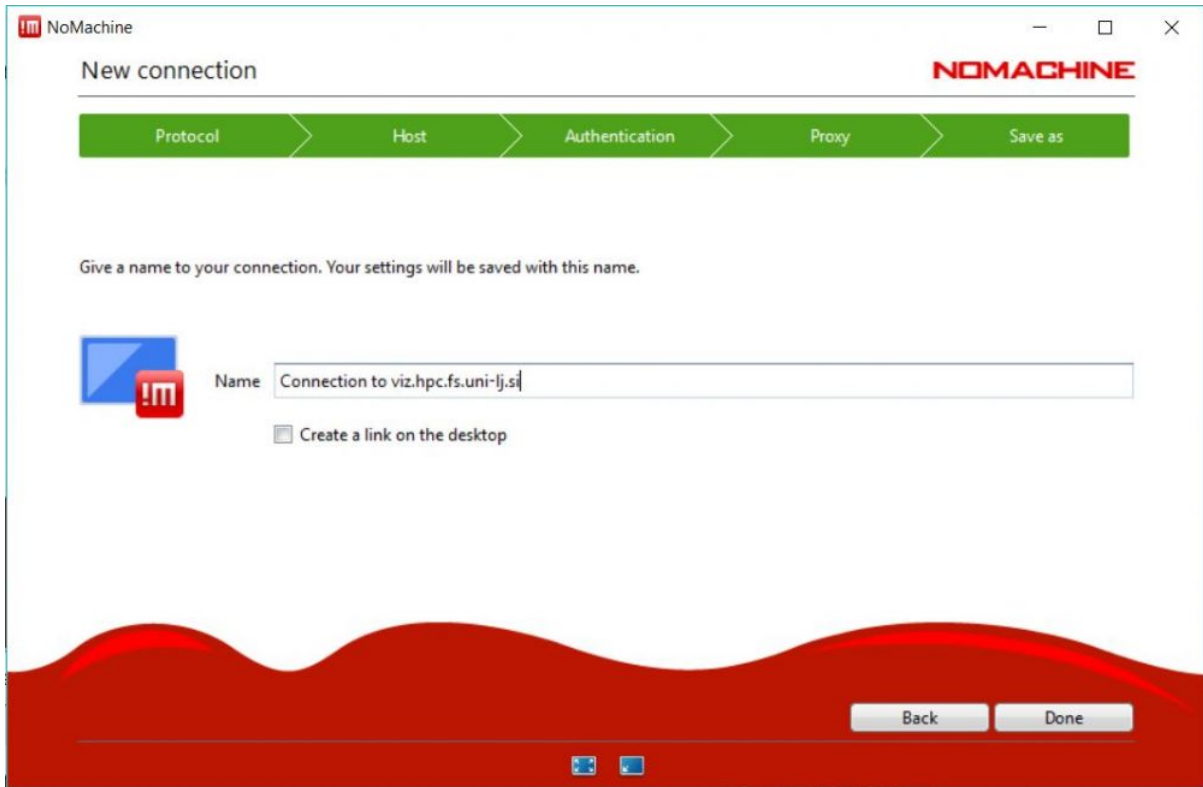
Enter the viz.hpc.fs.uni-lj.si and click on the "Continue" button



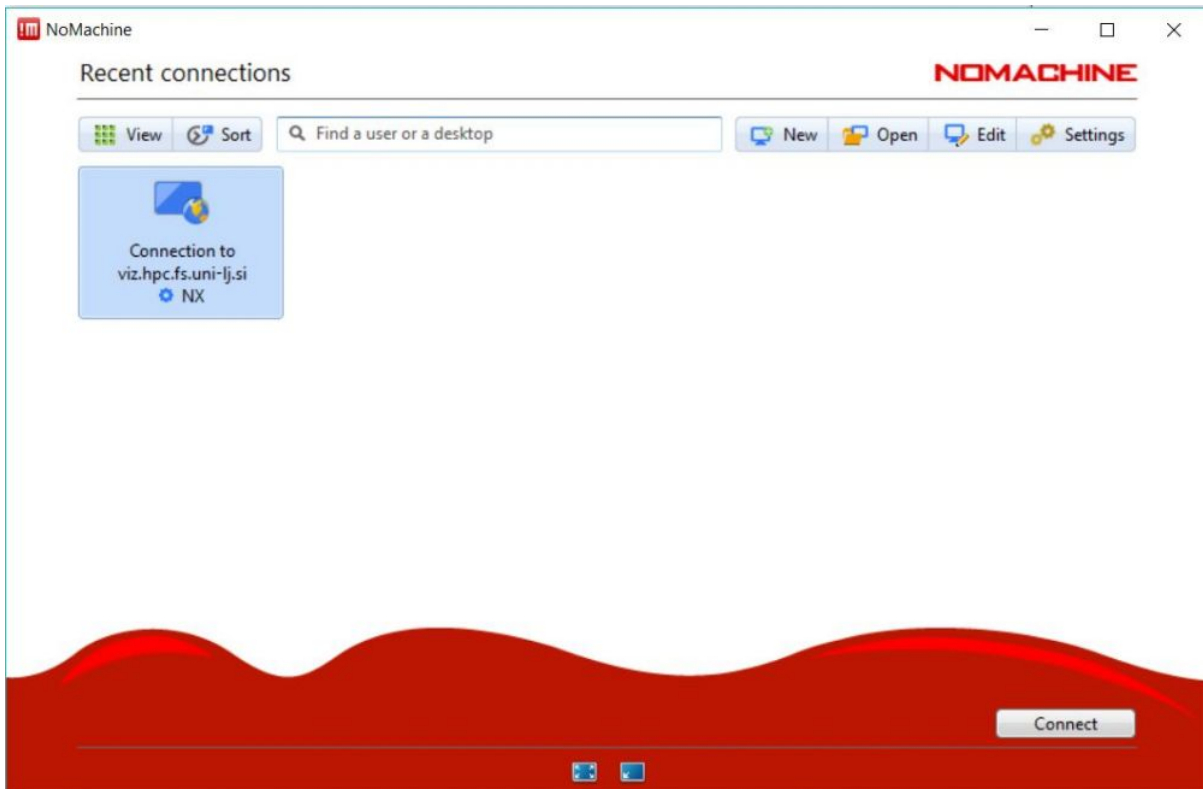
Select "Password" and click "Continue"

Select "Don't use a proxy" and click on "Continue"

Connection to HPCFS



Name your link and click on the "Done" button



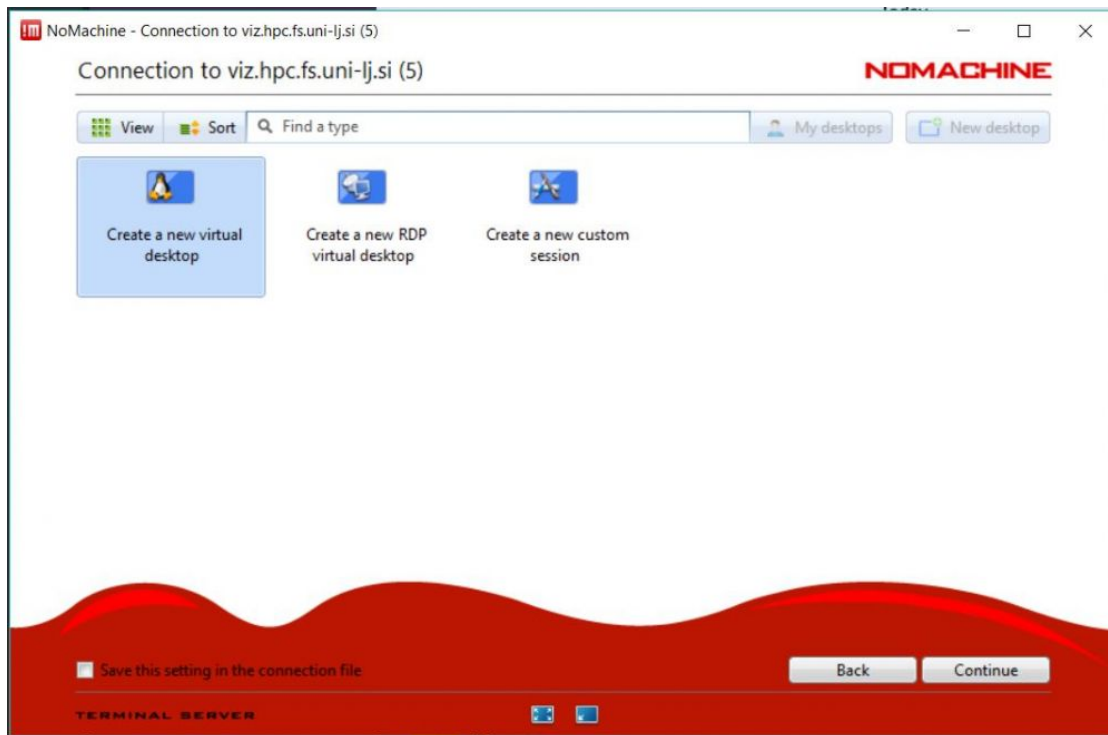
Select the saved link and click on the "Connect" button



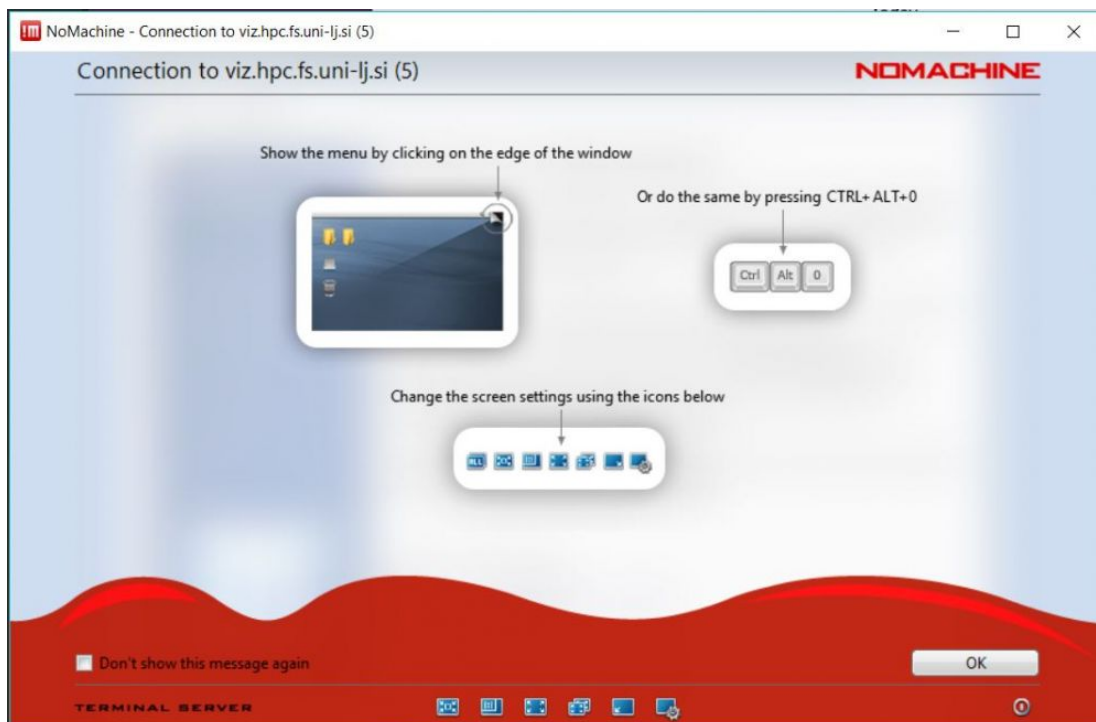
The first time you connect, you can be asked to confirm the server's validation. If the data matches, select Yes.



Enter your username on the HPC FS system and the password that unlocks your key and click on the "OK" button.



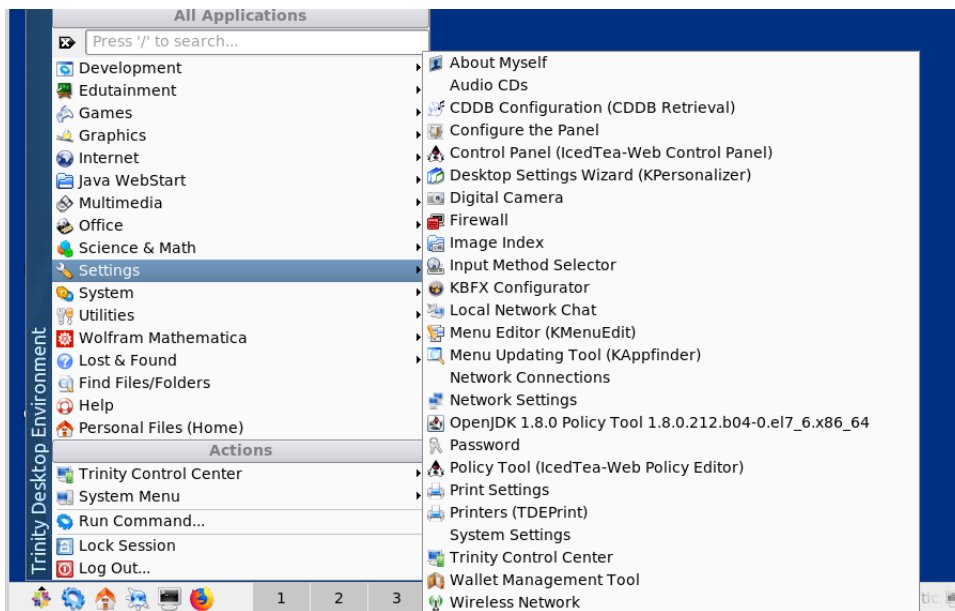
Select "Create a new virtual desktop" and click on the "Continue" button.



The program will show you how to manage your desktop. READ THEM CAREFULLY and continue by clicking on the "OK" button. The Process of Creating Your Desktop will begin.

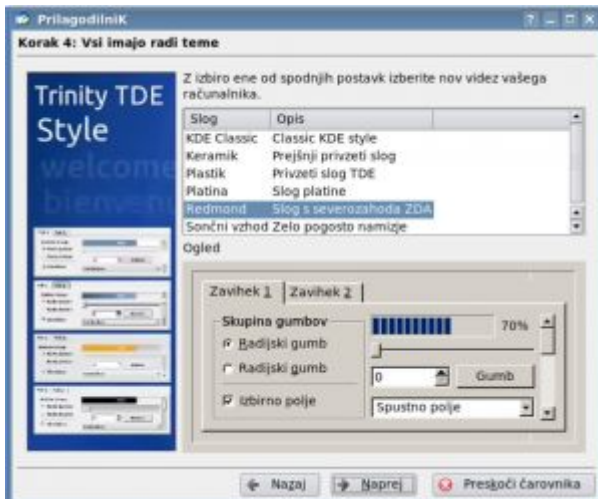
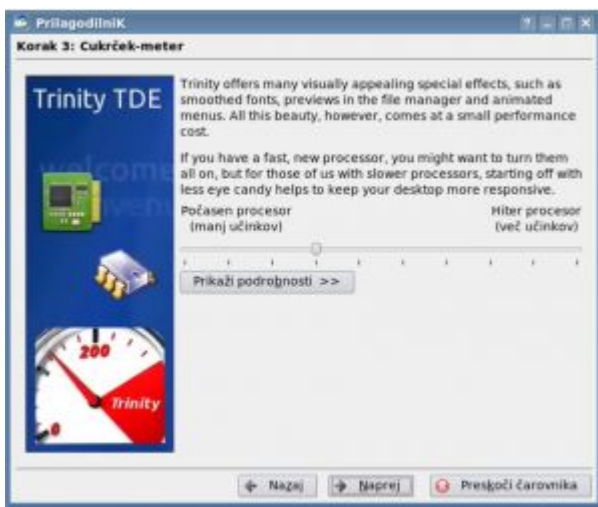
Desktop Setup Wizard

Please select Desktop Settings Wizard (kPersonalizer)



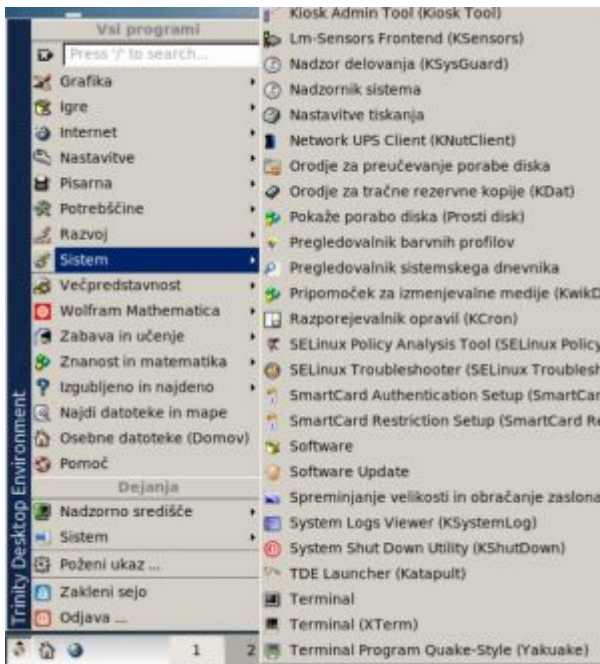
The Desktop Setup Wizard will appear the first time you start your desktop. We recommend settings, as in the screenshots below.







When you're done with the wizard, a new desktop will be ready for you. When you first start, you'll also have pop-ups with a presentation that you can close.

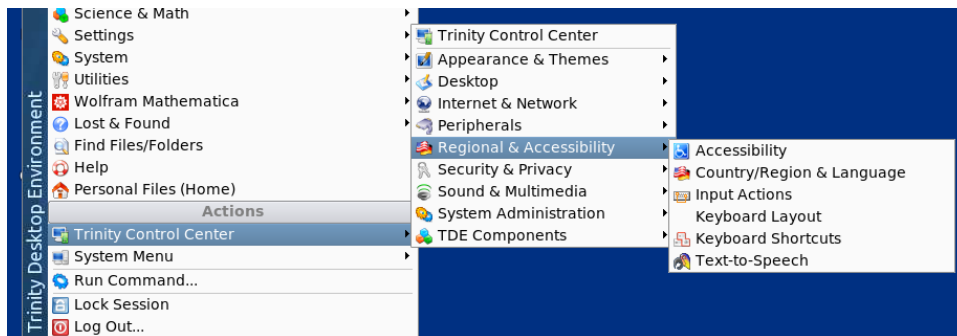


All programs are available to you from the Start menu.

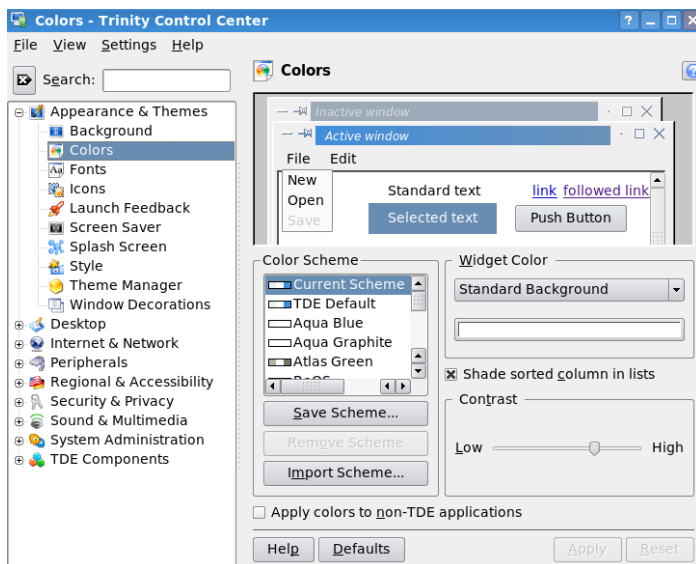
You can access the terminal from the system – Terminal

Keyboard selection and Colors for non-TDE applications

To select keyboard layout use



Disable use of colors for non-TDE applications in Trinity Control Center



When you're done with work, log off from the session. To do this, select Start menu – Logout