

Probe data from summer 2012.

by Karol Brzeziński

October 24, 2013

2D setup.

“Ring” data: 938,368 BGO-BGO events.

With “probe”: 808,368 BGO-BGO events, 130,952 Si-BGO events with Si detector in one position, to the right of the image. “Probe” data 14 %, event count is maintained.

30 iterations ML-EM, 0.2 mm grid, gaussian smoothing 0.4 mm FWHM.

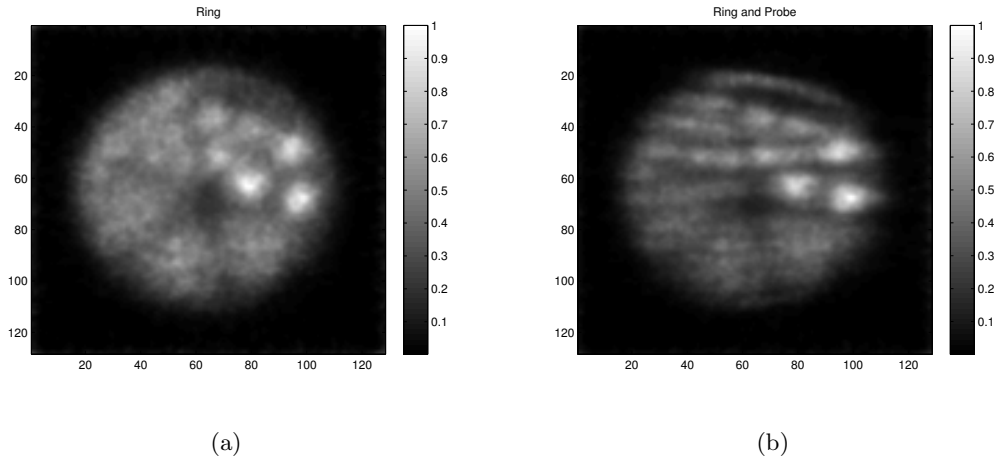


Figure 1. Images of the resolution phantom reconstructed using a) ring (BGO-BGO) data only and b) including “probe” data. The Si detector is to the right of the image.

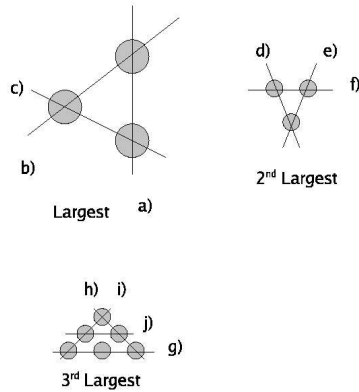


Figure 2. Three sections of the phantom where the three largest sizes of hot insets were located and through which profiles were taken. Largest = 4.8 mm. 2nd largest = 4.0 mm. 3rd largest = 3.2 mm

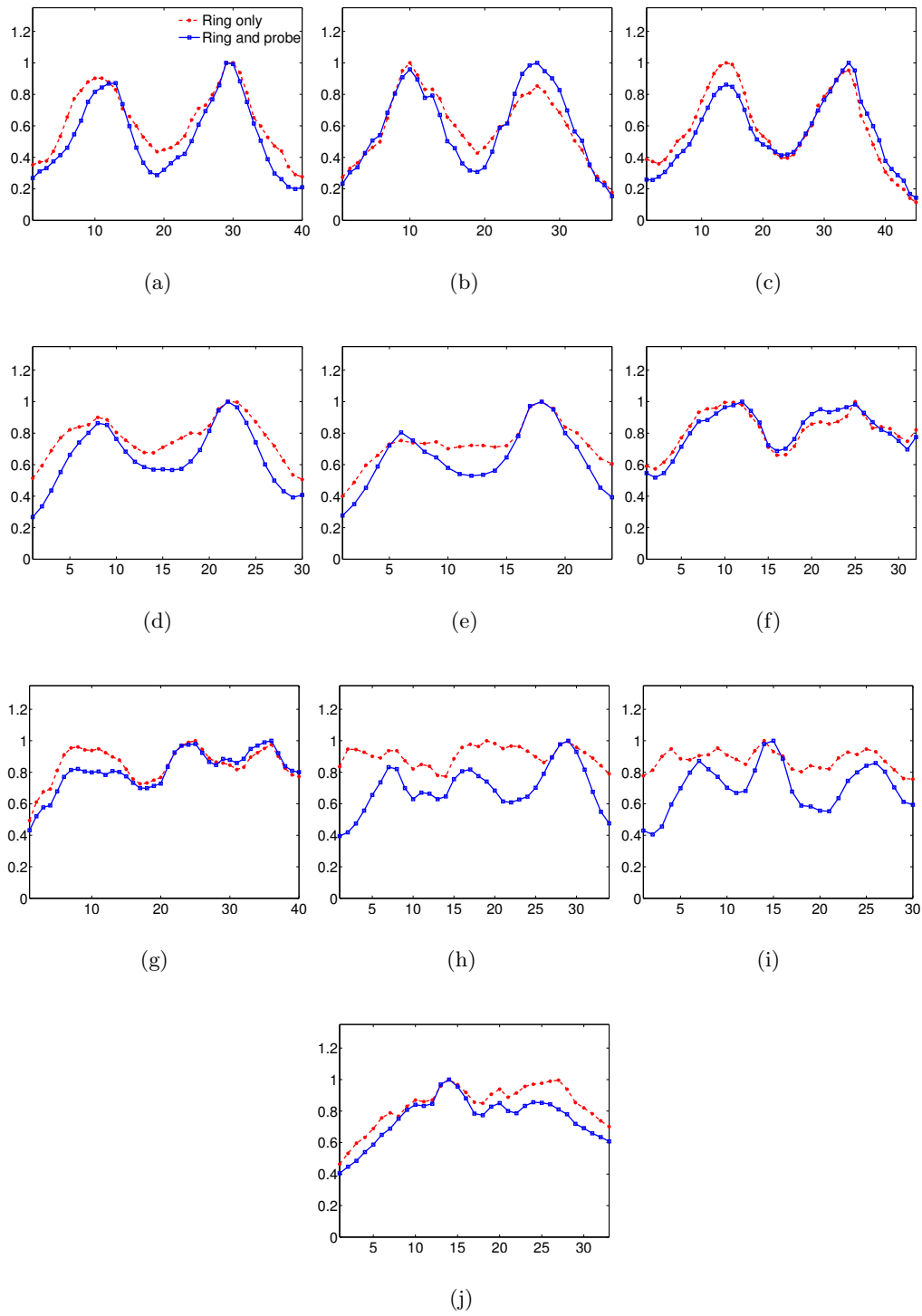


Figure 3. Comparison of profiles through the resolution phantom as defined in figure 2. Red lines represent the ring-only image and blue the one where “probe” data is included.